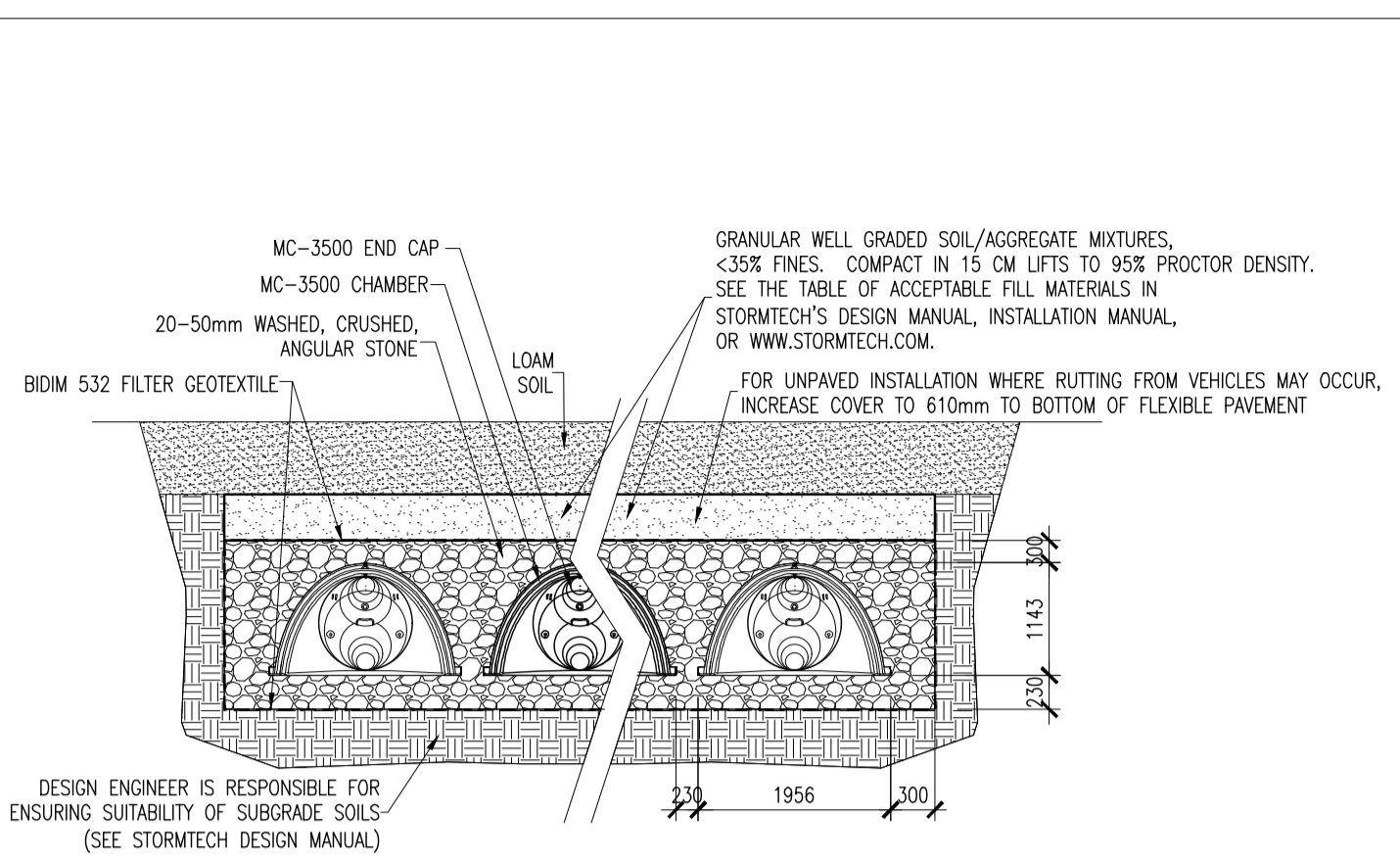
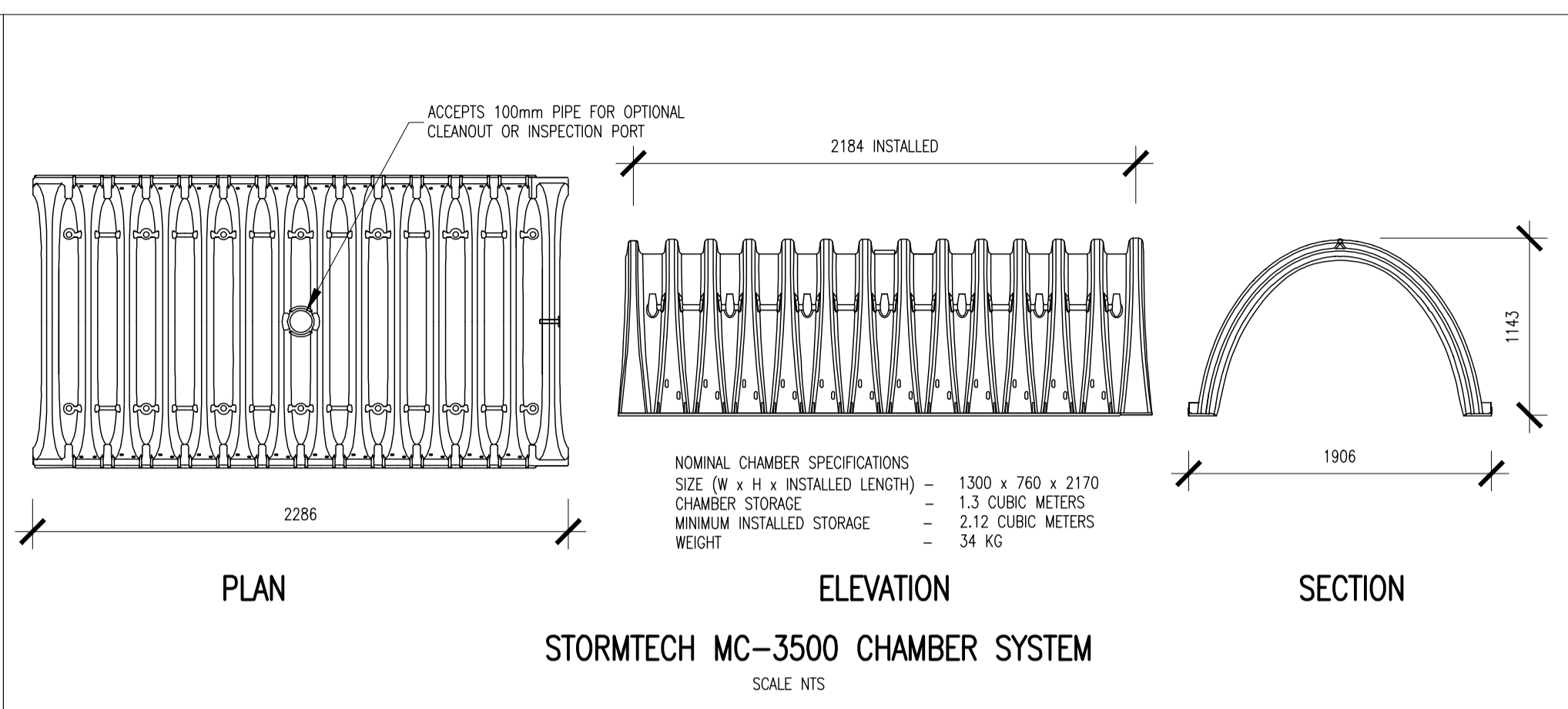


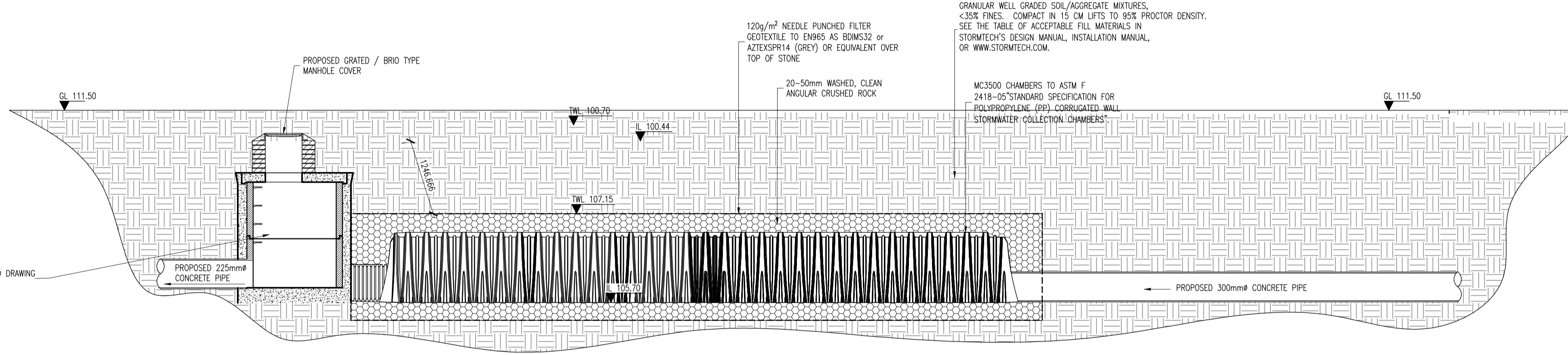
PLAN OF ATTENUATION TANK
SCALE 1:250



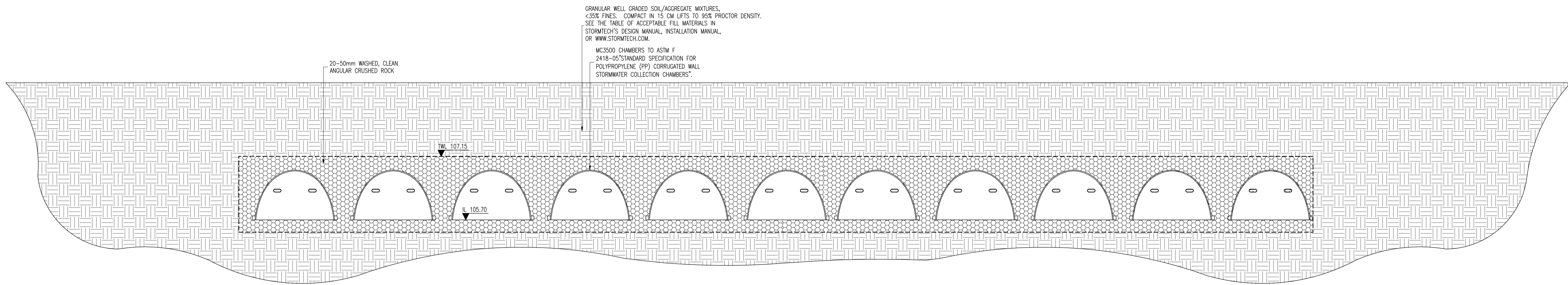
STORMTECH MC-3500 CHAMBER SYSTEM
SCALE NTS



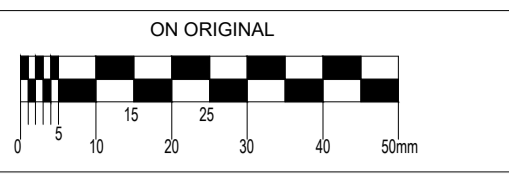
STORMTECH MC-3500 CHAMBER SYSTEM
SCALE NTS



SECTION A-A
SCALE 1:50



SECTION B-B
SCALE 1:50



© COPYRIGHT OF THIS DRAWING IS RESERVED BY DBFL CONSULTING ENGINEERS. NO PART SHALL BE REPRODUCED OR TRANSMITTED WITHOUT THEIR WRITTEN PERMISSION.

NO CHANGES OF WHATSOEVER NATURE ARE TO BE MADE TO ANY DETAILS SET OUT OR CONTAINED IN ANY DBFL SPECIFICATIONS OR DRAWINGS UNLESS THE EXPRESS CONSENT HAS BEEN OBTAINED IN ADVANCE, IN WRITING, FROM DBFL.

- NOTES:
GENERAL NOTES:
1. ALL SURFACE WATER MANHOLES AND DRAINAGE ARE TO BE CONSTRUCTED IN ACCORDANCE WITH THE REQUIREMENTS OF THE GREATER DUBLIN CODE OF PRACTICE FOR DRAINAGE WORKS.
 2. ALL FOUL DRAINAGE WORKS TO BE IN ACCORDANCE WITH IRISH WATERS' CODE OF PRACTICE FOR WASTEWATER SUPPLY AND WASTEWATER INFRASTRUCTURE STANDARD DETAILS.
 3. SURFACES FINISHES FOR CONCRETE:
 - 3.1. CLASS F1 FOR ALL CONCRETE 100mm OR MORE BELOW GROUND LEVEL.
 - 3.2. CLASS F3 FOR ALL EXPOSED CONCRETE ABOVE 100mm BELOW GROUND LEVEL.
 4. ALL EXPOSED CORNERS ON CONCRETE SHALL BE CHAMFERED WITH 25mm x 25mm CHAMFERS.
 5. ALL STRUCTURAL CONCRETE (HEADWALLS, RC MANHOLES, PETROL INTERCEPTOR SLABS) TO RECEIVE MC DUR 1680 (OR SIMILAR APPROVED TAR MODIFIED EPOXY RESIN) TO ALL BURIED SURFACES: TO FINISH 100mm BELOW GROUND LEVEL.
 6. ALL SEWERS SHALL BE PRESSURE TESTED PRIOR TO BACKFILLING.
 7. TYPE 1 GRANULAR MATERIAL: BROKEN STONE OR GRAVEL TO PASS 10mm SIEVE AND BE RETAINED ON 5mm SIEVE. TYPE 2 GRANULAR MATERIAL: BROKEN STONE OR GRAVEL TO PASS 10mm - 25mm SIEVE, ACCORDING TO PIPE SIZE, (SEE TABLE) AND BE RETAINED ON 5mm SIEVE.
 8. TYPE 3 SELECTED FILL: UNIFORM READY COMPACTED MATERIAL FREE FROM TREE ROOTS, VEGETABLE MATTER, BUILDING DEBRIS, AND FROZEN SOIL AND INCLUDING CLAY LUMPS RETAINED ON A 75mm SIEVE AND STONES RETAINED ON A 37.5mm SIEVE.
 7. ALL LADDERS, RUNGS, SAFETY CHAINS, etc SHALL BE HOT DIPPED GALVANISED TO BS 729 OR EQUIVALENT.

rev	date	description	by	chkd.
A-		Approved		
B-		Approved with comments		
C-		Do not use		

SO - WORK IN PROGRESS PLANNING

DBFL Consulting Engineers
Civil, Structural & Transportation Engineering
www.dbfl.ie

DUBLIN OFFICE: Ormond House, Upper Ormond Quay, Dublin 7. D07 W704
PHONE: +353 1 450 4000
CORC OFFICE: 14 South Mall, Cork, T12 CT91
PHONE: +353 21 204538
WATERFORD OFFICE: Suite 10 The Atrium, Maritime Gate, Canada Street, Waterford, X91 W028
PHONE: +353 51 309 500

project ref.
**WHITE PINES CENTRAL
RESIDENTIAL DEVELOPMENT**

drawing title
TYPICAL ATTENUATION DETAILS

client
ARDSTONE HOMES

designed by	author	scale	sheet size
SPB	JVS	AS SHOWN	A1
drawing no.	revision		
190004-DBFL-CS-SP-DR-C-5004	P0		